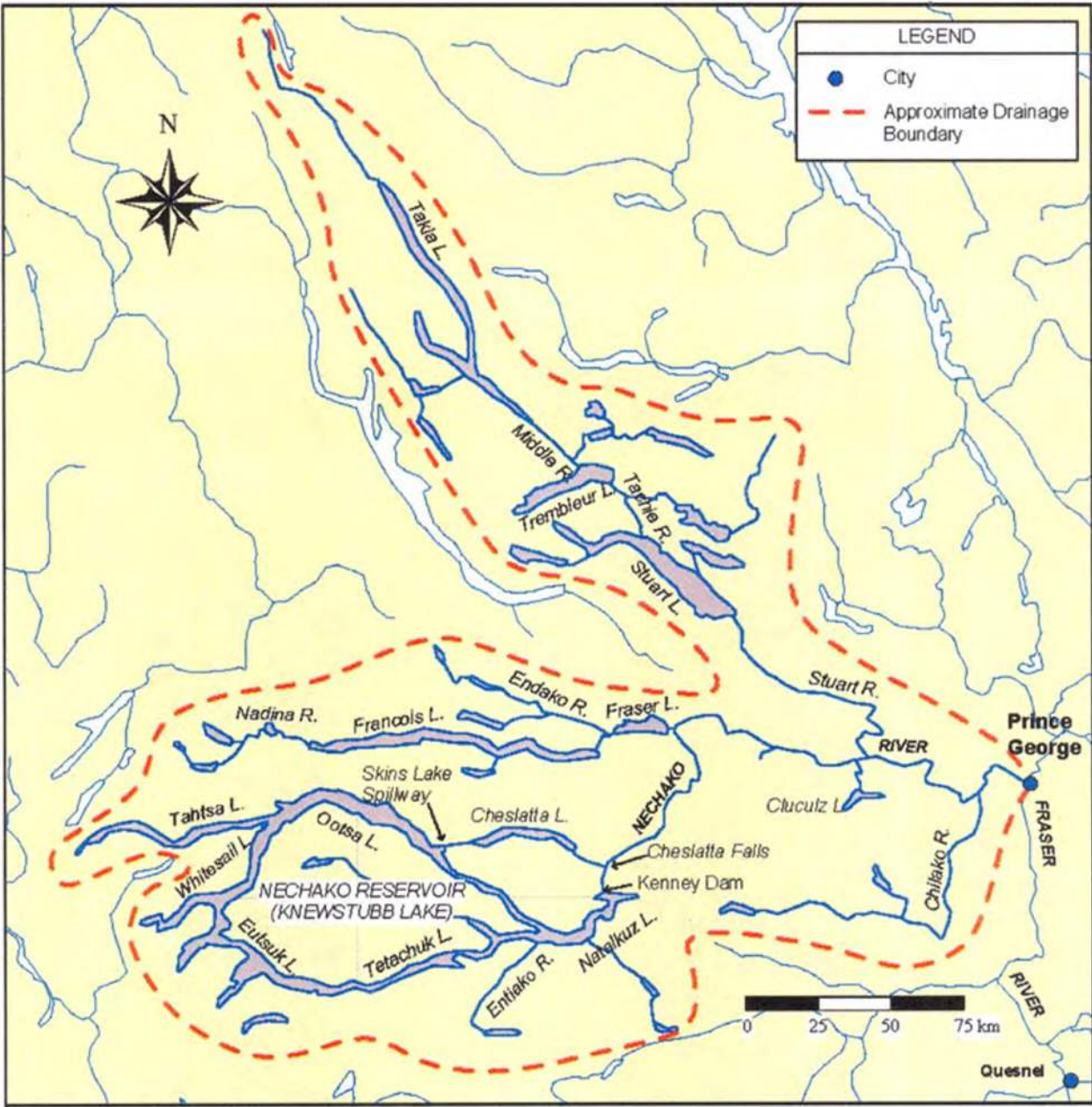


# Unit 1: Map of the Watershed

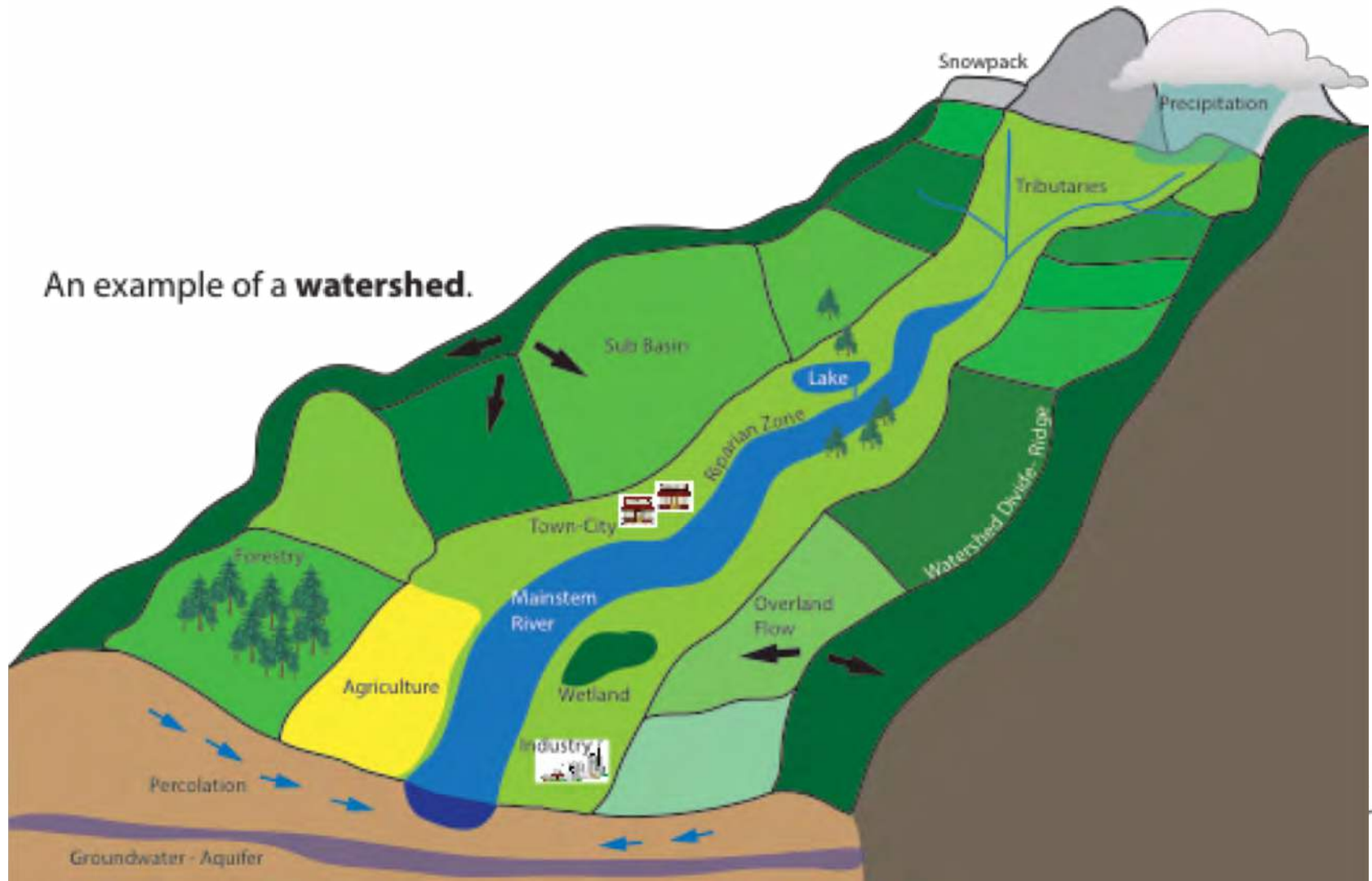


# What is a watershed?



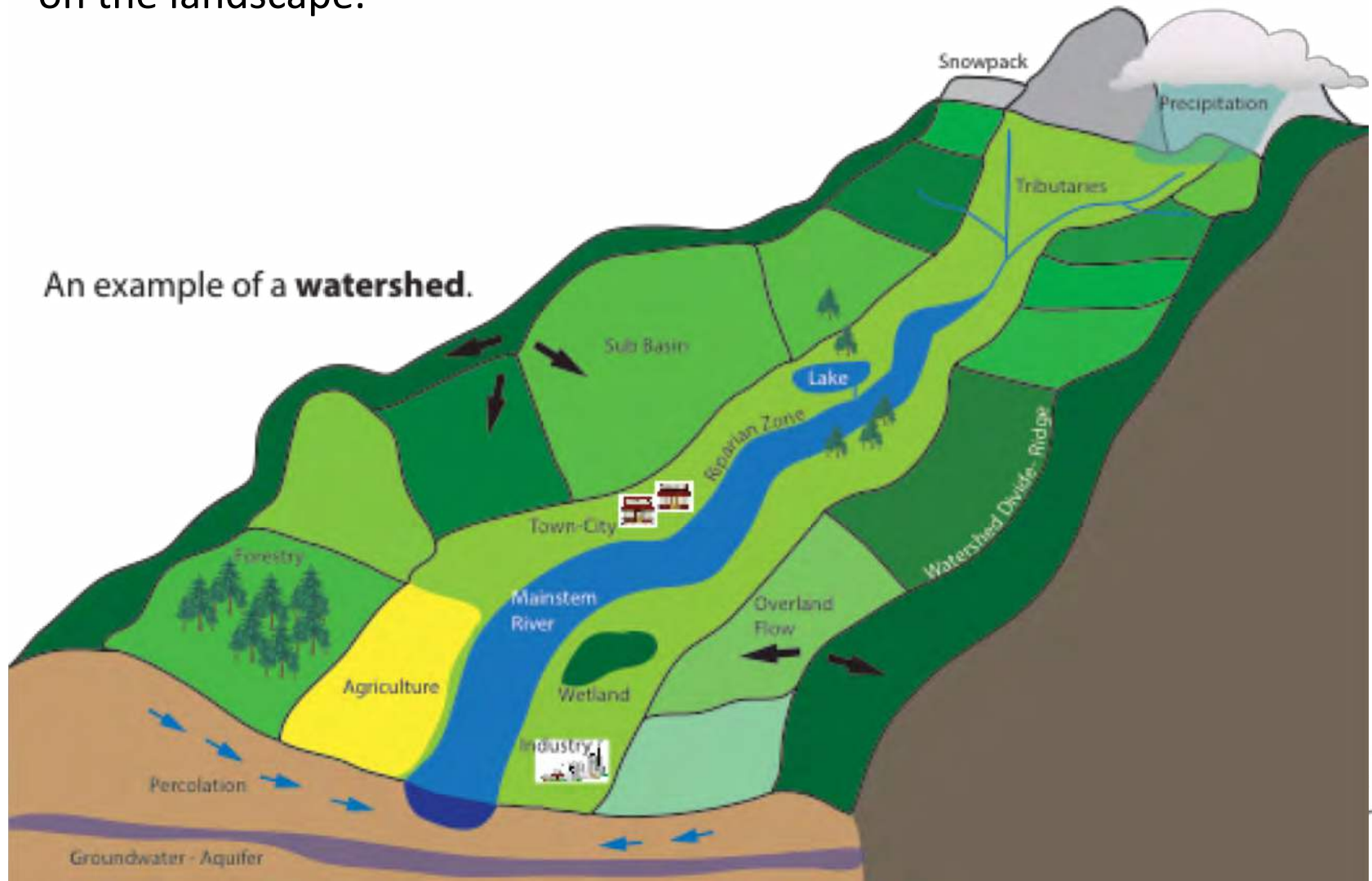
- A **watershed** is the area of land where all of the water that is under it or drains off of it goes into the same place – either a lake, marsh, stream, river or groundwater.

An example of a **watershed**.



- Watersheds are defined by the peaks and valleys of the land.
- Watersheds are influenced by the living and non-living components on the landscape.

An example of a **watershed**.



# Stop Here!

- Why are we learning about watersheds?
- What are some of the human uses of lands within a watershed?

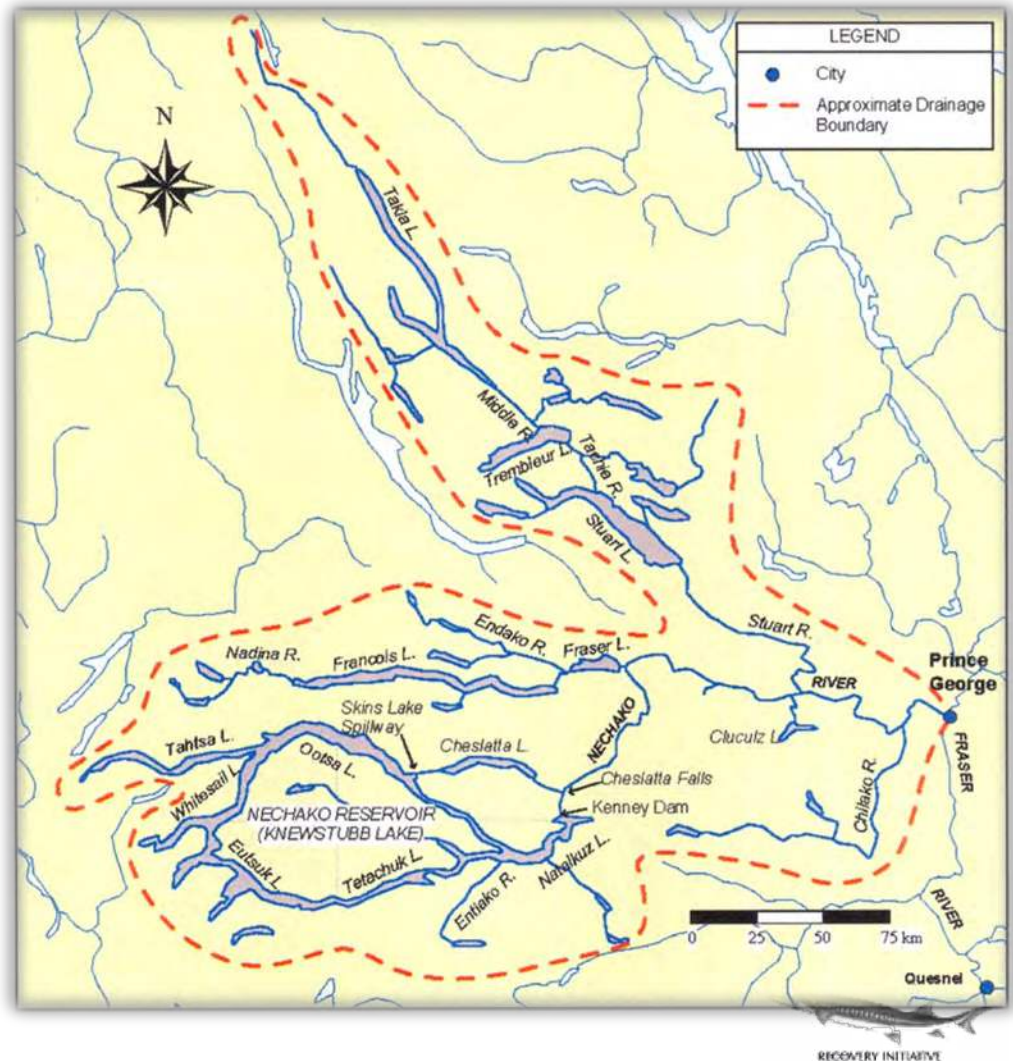


# The Nechako Watershed



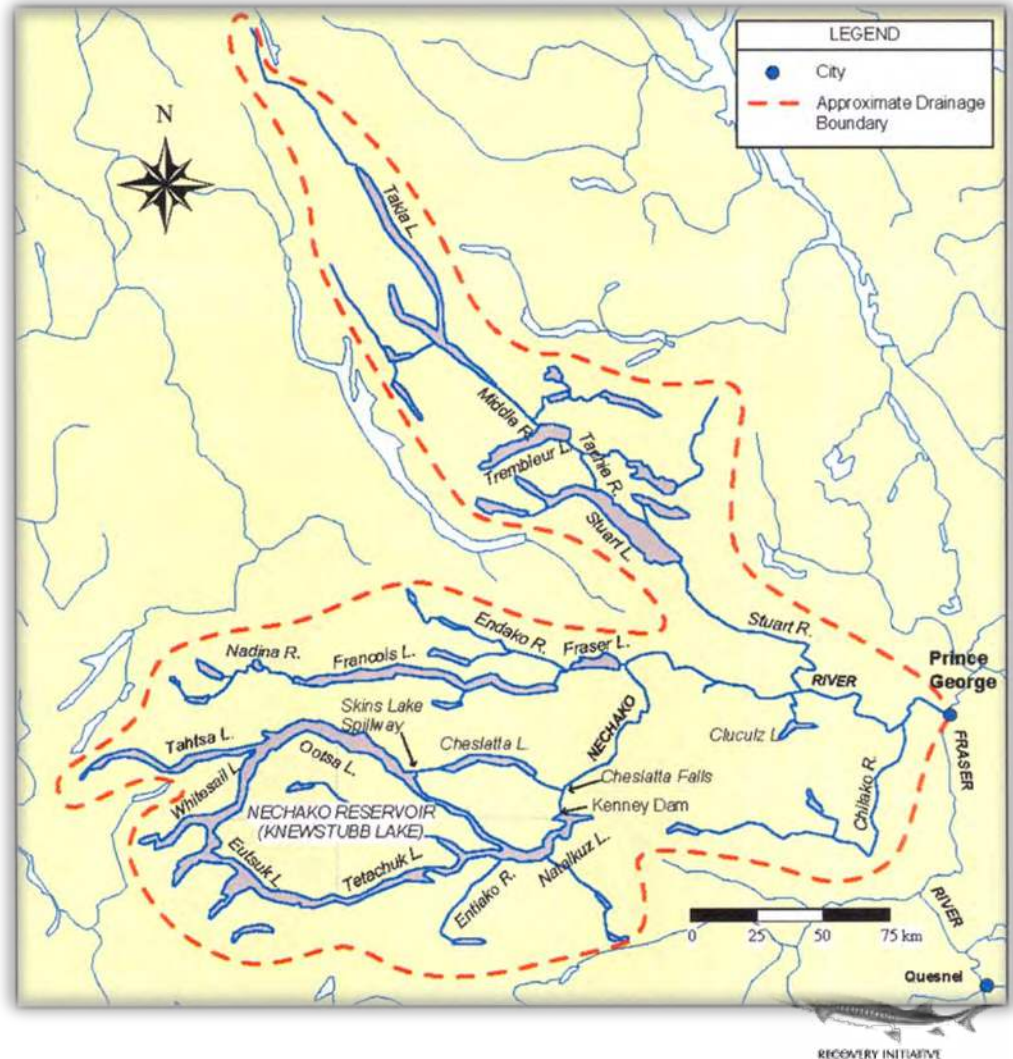
# The Nechako Watershed

- The red dotted line indicates the watershed boundary, or the ridge line. All water that falls inside the red dotted area eventually will flow into the Nechako River or in the groundwater.



# Facts: Nechako Watershed

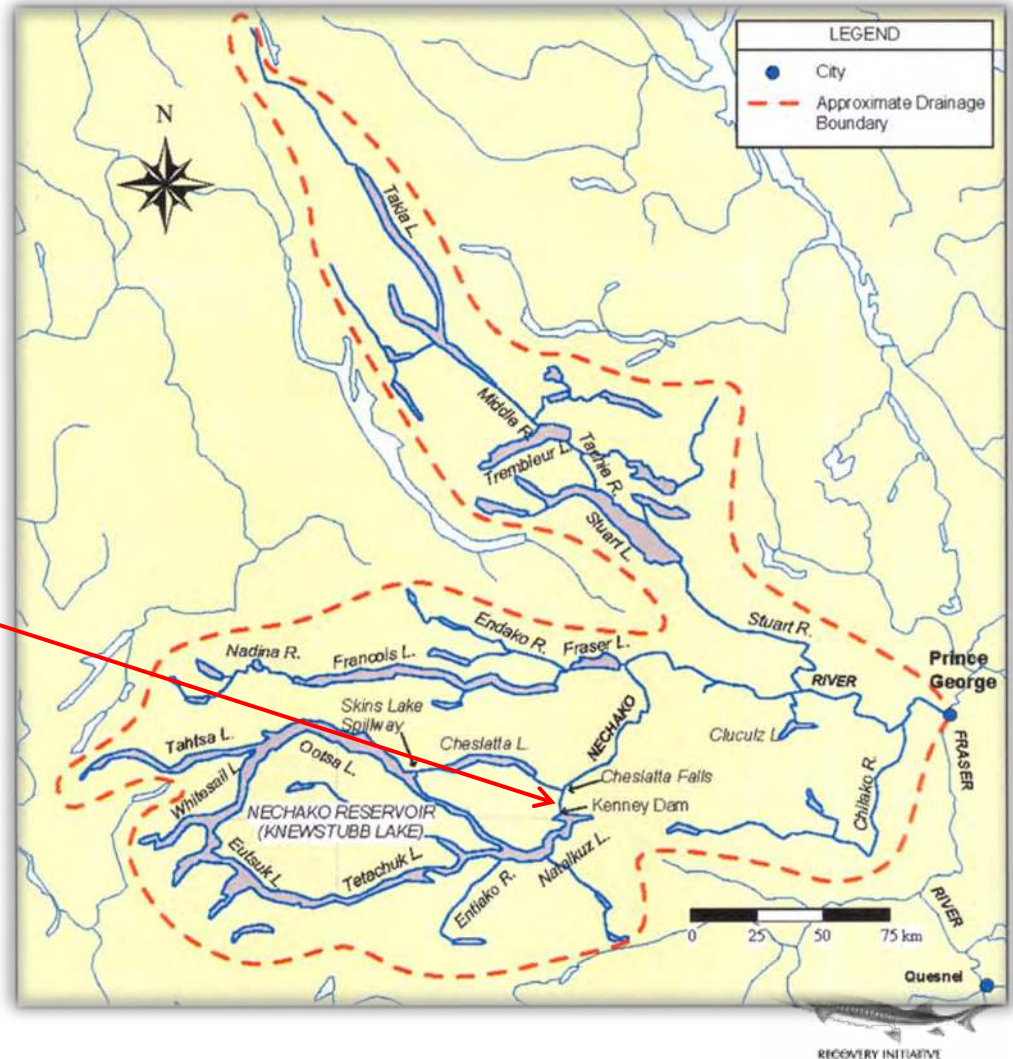
- The Nechako River is 290 km long.
- It is one of the largest tributaries to the Fraser River.
- Area = 52,000 km<sup>2</sup>





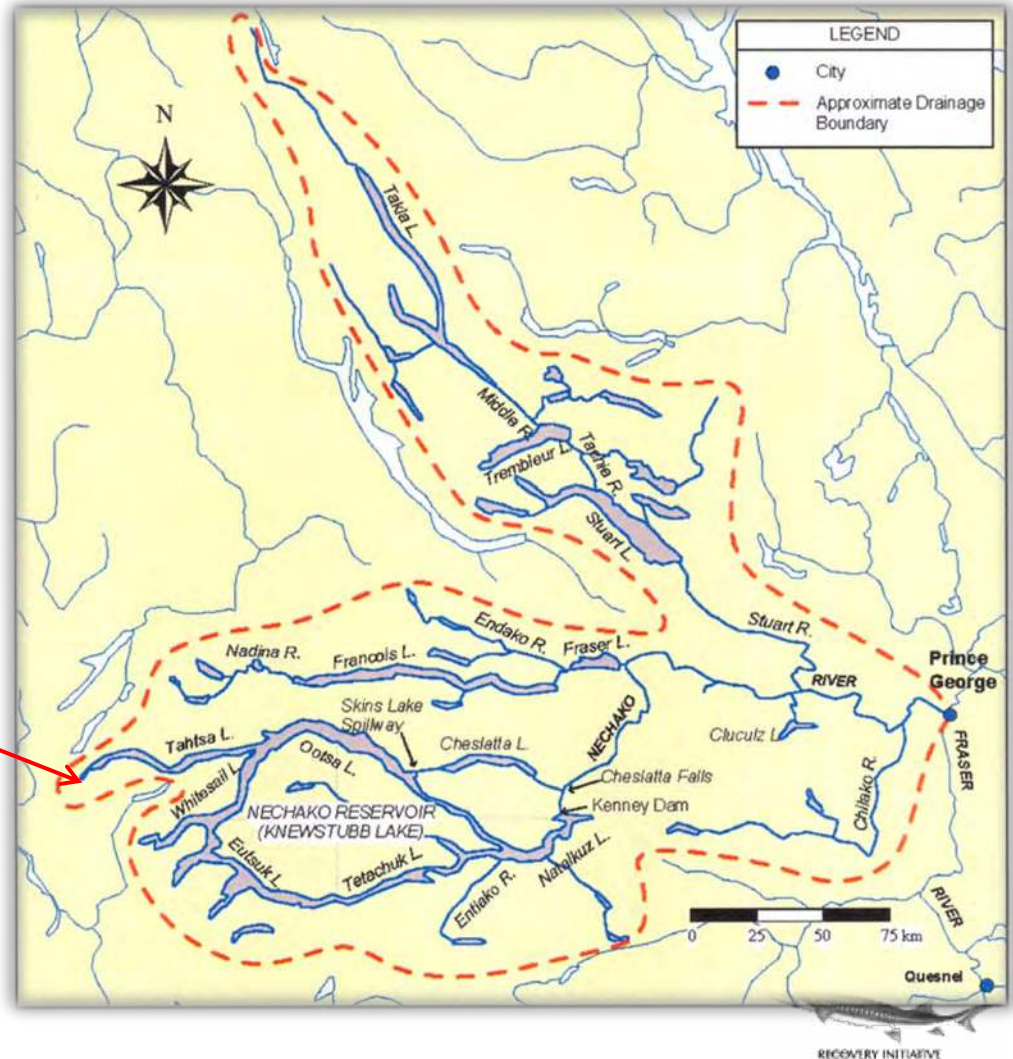
# Facts: Nechako Watershed

- The Nechako River is 290 km long.
- It is one of the largest tributaries to the Fraser River.
- Area = 52,000 km<sup>2</sup>
- Kenney Dam in the Upper Nechako River.



# Facts: Nechako Watershed

- The Nechako River is 290 km long.
- It is one of the largest tributaries to the Fraser River.
- Area = 52,000 km<sup>2</sup>
- Kenney Dam in the Upper Nechako River.
- Much of the water of the Upper Nechako River is diverted west to Kemanó for power.



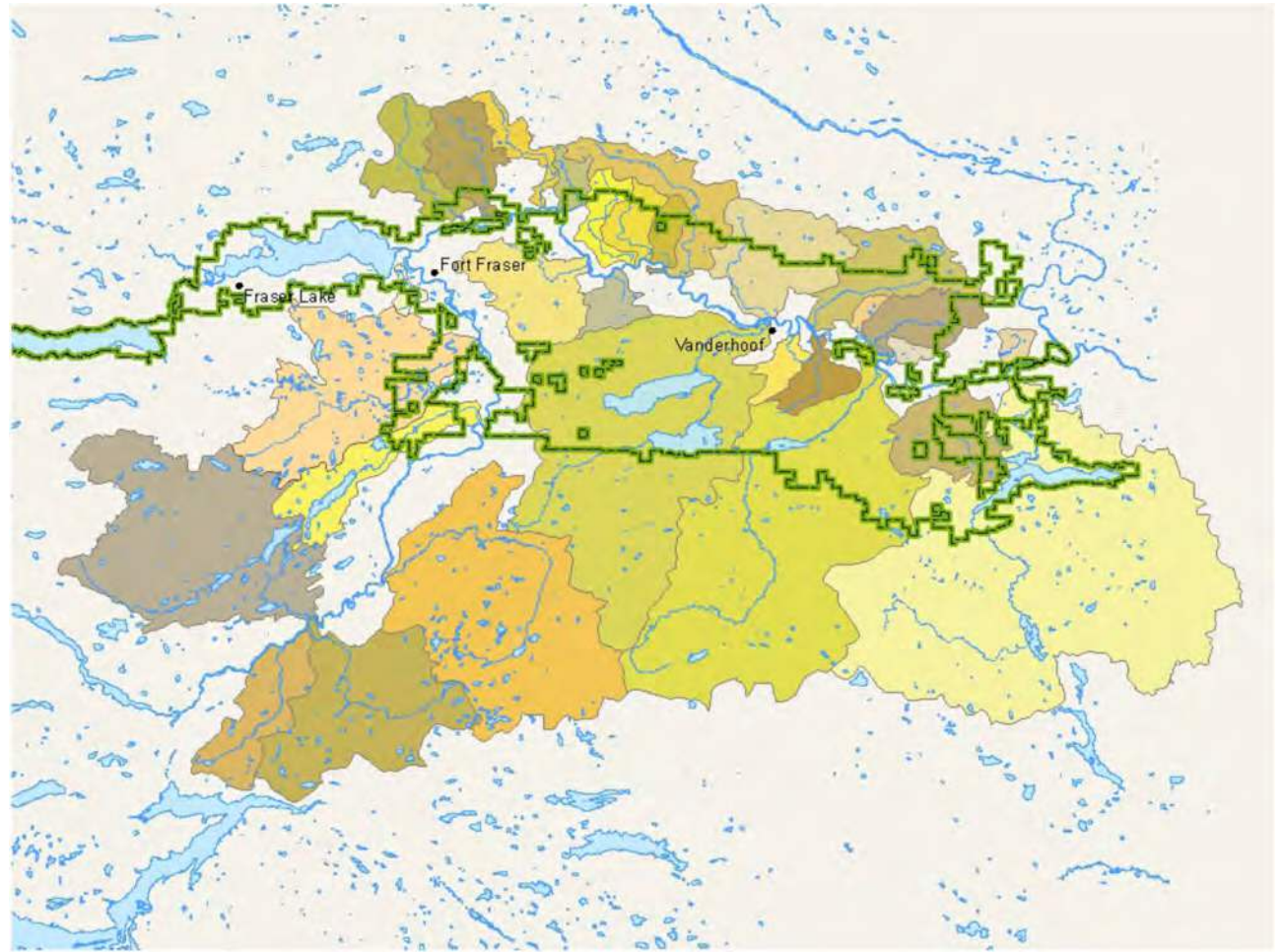
# Kenney Dam & Reservoir

- Built in 1952 to create a reservoir.
- Water in the reservoir flows both WEST (to generate energy to make aluminium), and EAST into the Nechako River.
- **Results:**
  - Less water into the Nechako River than before.
  - Changed the width, depth and amount of in the river.
  - Reduced flooding in the river.
  - Some areas of the are dry or a lake.
  - Significantly altered the overall ecosystem.



# Sub Basins of the Nechako Watershed

- There are over 30 **sub basins** or smaller river systems within the Nechako Watershed.
- The green line indicates the agricultural land in the Nechako Watershed.



NECHAKO WHITE STURGEON



RECOVERY INITIATIVE

What does this all mean for  
Nechako white sturgeon?



Changes to the shape, size and flow in the river may contribute to the decrease in population size.

