

GRADE 11-12

HOW TO USE THIS CALENDAR

Click on the [LINKS](#) in this calendar to watch videos, get to lessons plans and more. Dates are categorized by...

- Sturgeon
- Salmon
- School Activity Days
- Mammals
- Community Events
- Invertebrates
- Watershed

2023-2024 STURGEON CALENDAR

QUICK LINKS

- V1 - Conservation Centre
- V2 - Spawning to Release Stage
- V3 - Sturgeon in the Wild
- V4 - Predation
- V5 - Changes in the Watershed
- V6 - Recovery of the NWS Population
- V7 - Monitoring Programs
- V8 - Sturgeon in the Winter
- V9 - Sturgeon Life Cycle (K-7)
- Sturgeon Curriculum Outline
- Nature Guide to the Nechako Valley
- Every Sturgeon Counts
- NWSCC Virtual Tour - Fall
- NWSCC Virtual Tour - Spring
- NWSCC Virtual Tour - Summer

@NWSRI

www.nechakowhitesturgeon.org

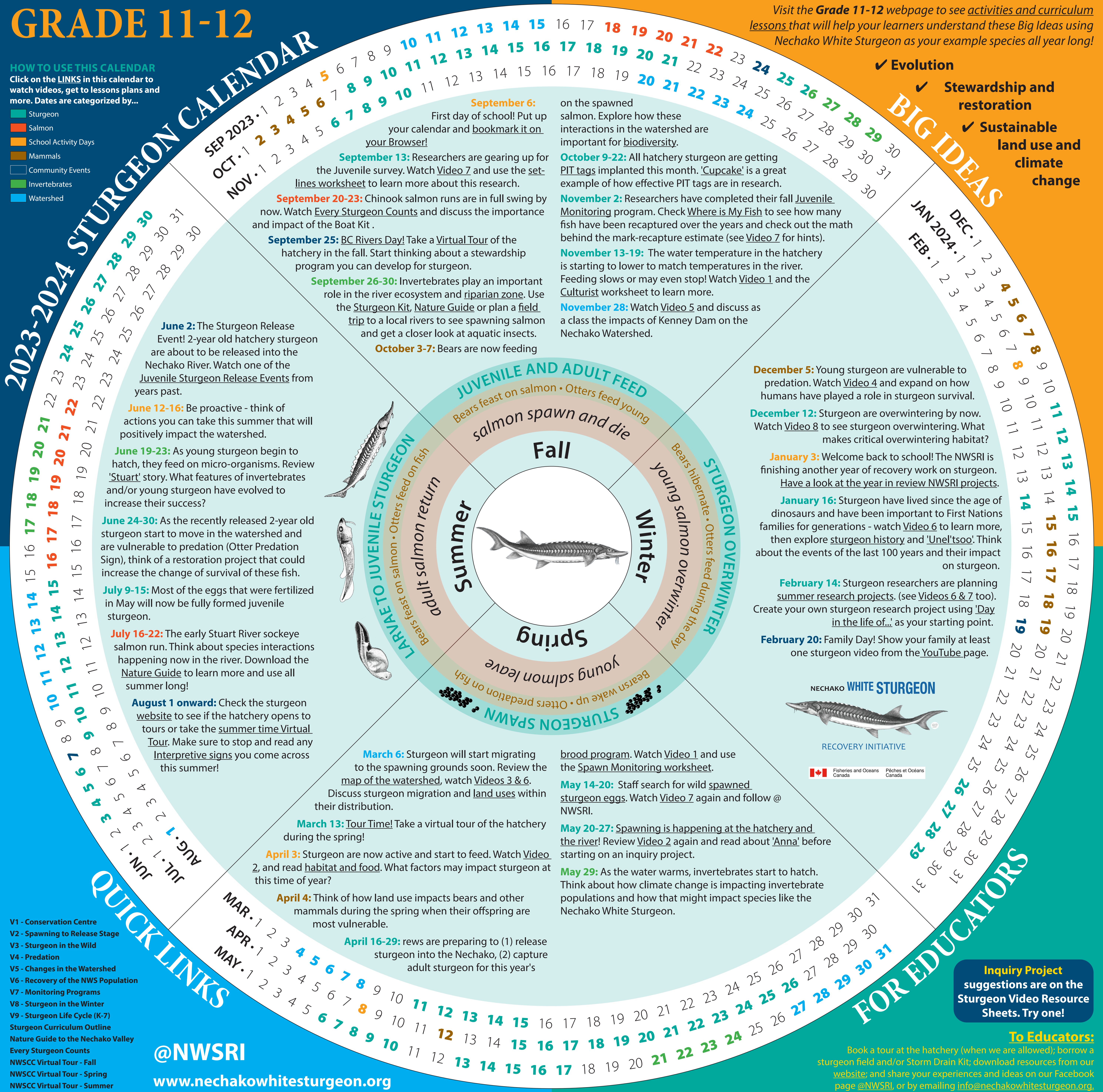
Visit the [Grade 11-12 webpage](#) to see [activities and curriculum lessons](#) that will help your learners understand these Big Ideas using Nechako White Sturgeon as your example species all year long!

✓ Evolution

✓ Stewardship and restoration

✓ Sustainable land use and climate change

BIG IDEAS



SEP 2023 • 1 2 3 4 5 6 7 8 9 10 11 12 13 14 15 16 17 18 19 20 21 22 23 24 25 26 27 28 29 30

OCT • 1 2 3 4 5 6 7 8 9 10 11 12 13 14 15 16 17 18 19 20 21 22 23 24 25 26 27 28 29 30

NOV • 1 2 3 4 5 6 7 8 9 10 11 12 13 14 15 16 17 18 19 20 21 22 23 24 25 26 27 28 29 30

DEC • 1 2 3 4 5 6 7 8 9 10 11 12 13 14 15 16 17 18 19 20 21 22 23 24 25 26 27 28 29 30 31

JAN 2024 • 1 2 3 4 5 6 7 8 9 10 11 12 13 14 15 16 17 18 19 20 21 22 23 24 25 26 27 28 29 30 31

FEB • 1 2 3 4 5 6 7 8 9 10 11 12 13 14 15 16 17 18 19 20 21 22 23 24 25 26 27 28 29 30 31

MAR • 1 2 3 4 5 6 7 8 9 10 11 12 13 14 15 16 17 18 19 20 21 22 23 24 25 26 27 28 29 30 31

APR • 1 2 3 4 5 6 7 8 9 10 11 12 13 14 15 16 17 18 19 20 21 22 23 24 25 26 27 28 29 30 31

June 2: The Sturgeon Release Event! 2-year old hatchery sturgeon are about to be released into the Nechako River. Watch one of the [Juvenile Sturgeon Release Events](#) from years past.

June 12-16: Be proactive - think of actions you can take this summer that will positively impact the watershed.

June 19-23: As young sturgeon begin to hatch, they feed on micro-organisms. Review 'Stuart' story. What features of invertebrates and/or young sturgeon have evolved to increase their success?

June 24-30: As the recently released 2-year old sturgeon start to move in the watershed and are vulnerable to predation (Otter Predation Sign), think of a restoration project that could increase the change of survival of these fish.

July 9-15: Most of the eggs that were fertilized in May will now be fully formed juvenile sturgeon.

July 16-22: The early Stuart River sockeye salmon run. Think about species interactions happening now in the river. Download the [Nature Guide](#) to learn more and use all summer long!

August 1 onward: Check the sturgeon [website](#) to see if the hatchery opens to tours or take the [summer time Virtual Tour](#). Make sure to stop and read any [Interpretive signs](#) you come across this summer!

September 6: First day of school! Put up your calendar and [bookmark it on your Browser!](#)

September 13: Researchers are gearing up for the Juvenile survey. Watch [Video 7](#) and use the [set-lines worksheet](#) to learn more about this research.

September 20-23: Chinook salmon runs are in full swing by now. Watch [Every Sturgeon Counts](#) and discuss the importance and impact of the Boat Kit .

September 25: BC Rivers Day! Take a [Virtual Tour](#) of the hatchery in the fall. Start thinking about a stewardship program you can develop for sturgeon.

September 26-30: Invertebrates play an important role in the river ecosystem and [riparian zone](#). Use the [Sturgeon Kit](#), [Nature Guide](#) or plan a [field trip](#) to a local rivers to see spawning salmon and get a closer look at aquatic insects.

October 3-7: Bears are now feeding

October 9-22: All hatchery sturgeon are getting PIT tags implanted this month. 'Cupcake' is a great example of how effective PIT tags are in research.

November 2: Researchers have completed their fall [Juvenile Monitoring](#) program. Check [Where is My Fish](#) to see how many fish have been recaptured over the years and check out the math behind the mark-recapture estimate (see [Video 7](#) for hints).

November 13-19: The water temperature in the hatchery is starting to lower to match temperatures in the river. Feeding slows or may even stop! Watch [Video 1](#) and the [Culturist](#) worksheet to learn more.

November 28: Watch [Video 5](#) and discuss as a class the impacts of Kenney Dam on the Nechako Watershed.

December 5: Young sturgeon are vulnerable to predation. Watch [Video 4](#) and expand on how humans have played a role in sturgeon survival.

December 12: Sturgeon are overwintering by now. Watch [Video 8](#) to see sturgeon overwintering. What makes critical overwintering habitat?

January 3: Welcome back to school! The NWSRI is finishing another year of recovery work on sturgeon. [Have a look at the year in review NWSRI projects.](#)

January 16: Sturgeon have lived since the age of dinosaurs and have been important to First Nations families for generations - watch [Video 6](#) to learn more, then explore [sturgeon history](#) and 'Unel'tsoo'. Think about the events of the last 100 years and their impact on sturgeon.

February 14: Sturgeon researchers are planning [summer research projects](#). (see [Videos 6 & 7](#) too). Create your own sturgeon research project using 'Day in the life of...' as your starting point.

February 20: Family Day! Show your family at least one sturgeon video from the [YouTube](#) page.

March 6: Sturgeon will start migrating to the spawning grounds soon. Review the [map of the watershed](#), watch [Videos 3 & 6](#). Discuss sturgeon migration and [land uses](#) within their distribution.

March 13: [Tour Time!](#) Take a virtual tour of the hatchery during the spring!

April 3: Sturgeon are now active and start to feed. Watch [Video 2](#), and read [habitat and food](#). What factors may impact sturgeon at this time of year?

April 4: Think of how land use impacts bears and other mammals during the spring when their offspring are most vulnerable.

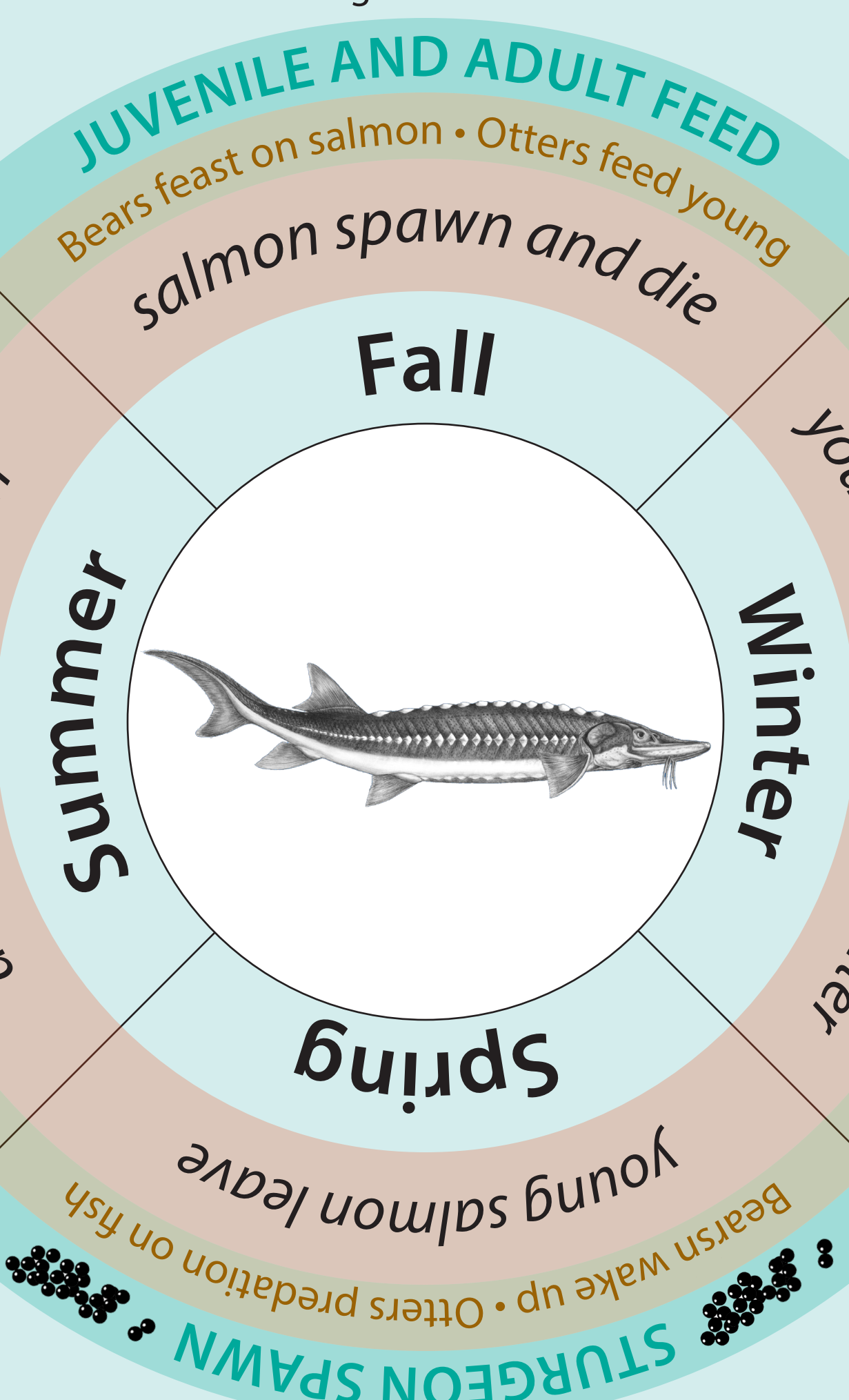
April 16-29: rews are preparing to (1) release sturgeon into the Nechako, (2) capture adult sturgeon for this year's

brood program. Watch [Video 1](#) and use the [Spawn Monitoring worksheet](#).

May 14-20: Staff search for wild [spawned sturgeon eggs](#). Watch [Video 7](#) again and follow @NWSRI.

May 20-27: [Spawning is happening at the hatchery and the river!](#) Review [Video 2](#) again and read about 'Anna' before starting on an inquiry project.

May 29: As the water warms, invertebrates start to hatch. Think about how climate change is impacting invertebrate populations and how that might impact species like the Nechako White Sturgeon.



Fisheries and Oceans Canada / Pêches et Océans Canada

Inquiry Project suggestions are on the Sturgeon Video Resource Sheets. Try one!

To Educators: Book a tour at the hatchery (when we are allowed); borrow a sturgeon field and/or Storm Drain Kit; download resources from our [website](#); and share your experiences and ideas on our Facebook page @NWSRI, or by emailing info@nechakowhitesturgeon.org.